



IB Primary Years Programme in AACPS

Authorized Schools

- Eastport
- Germantown
- Hebron Harman
- Manor View
- Monarch Global
- Overlook
- Southgate
- South Shore
- Sunset
- Tracey's
- Waugh Chapel

Candidate Schools

- Jacobsville
- Monarch Annapolis

IB Office Contact Information

Mary Austin
District Coordinator
maustin1@aacps.org
410-222-5415

Angela Speach
IB Specialist
aspeach@aacps.org
410-222-5415

Stacey Komsa
IB PYP Specialist
skomsa@aacps.org
410-222-5415

FAQ's : Teaching & Learning

Which grade levels offer the IB Primary Years Programme (PYP)?

The IB PYP is offered in Pre-K through Grade 5.

Do all students at an IB PYP school participate in the program?

Yes, the IB PYP is a whole school model. Any child who lives in an IB PYP school zone in AACPS can attend the school and will receive IB PYP instruction.

Is there an opportunity in AACPS for students to continue their IB education after elementary school?

AACPS offers "Programs of Choice" to students in middle and high school. Visit aacps.org/magnet to learn about the six IB MYP and IB DP middle and high school programs.

Is the IB PYP curriculum different from the AACPS curriculum?

The IB PYP is a framework designed to align with local and national standards. Teachers in IB PYP schools in AACPS use the Common Core, Next Generation Science, and Maryland Content Standards from the AACPS curriculum in order to develop six concept-based, transdisciplinary units of inquiry. *Project Based Learning, STEM, ALPS and Arts Integration* are incorporated within the IB PYP units.

How are students grouped in an IB PYP school?

In order to engage in transdisciplinary units, students remain with the same teacher for majority of their day, to include reading, writing, math, social studies, and science. Students are grouped within the classroom to receive differentiated instruction to meet their academic needs.

Do IB PYP students receive ALPS and/or GT instruction?

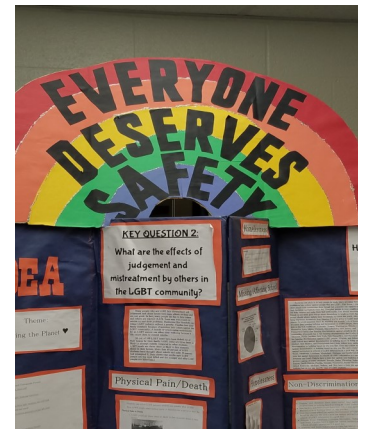
Yes. ALPs Instruction is integrated into the IB PYP classroom experience allowing students to engage with material on their instructional level.

How are students assessed?

Students take the AACPS benchmark assessments for Elementary Reading, Math, Science and Social Studies. Science and Social Studies benchmarks are adjusted, as needed, to align the content standards to the IB PYP units of inquiry. Teachers use formative and summative assessments to plan for instruction and determine student growth. Summative assessments are authentic, rigorous, and multi-modal.

Is there a culminating project at the end of the IB PYP?

In Grade 5, IB PYP students participate in an Exhibition. This culminating project requires students to use the skills they have developed throughout the program to



5th Grade Exhibition Project '17

research an area of interest that is also an area of need in their local or global community. With the help of a mentor, students take self-directed action: advocacy, research, direct action or indirect action.

Which languages are offered at IB PYP schools?

Each IB PYP school offers students instruction in a second language: French, German, Italian, Mandarin Chinese, or Spanish. Please visit the schools' websites through www.aacps.org to see which language is offered.

Benefits to the Community

Student-centered approach develops a positive attitude toward learning ◆ Students develop skills for future success ◆ Instruction is tailored to meet the school's needs and values ◆ Teachers receive ongoing Professional Development and network of support ◆ Training for all teachers ensures consistency ◆ Promotes local and global awareness





IB Primary Years Programme in AACPS

WE ARE....

The future innovators

The future local and global business owners

The future diplomats

The future Doctors Without Borders

The future environmentalists

The future artists

The future educators

The future inventors

The future musicians and dancers

The citizens of the future

WE ARE IB!



PYP Overview

The Primary Years Programme is designed for students in Pre-K to 5th Grade.

Focuses on the growth of the developing child, encompassing social, physical, emotional and cultural needs.

Fosters the development of students who embody the IB Learner Profile. PYP students strive to be:

Inquirers	Principled
Thinkers	Caring
Communicators	Risk-takers
Knowledgeable	Open-minded
Balanced	Reflective

PYP curriculum framework expands the objectives of AACPS by providing breadth and depth to students' understandings in all areas.

Provides instruction in English and exposure to an additional world language.

Learning is organized into themes:

- Who We Are
- Where We Are in Place and Time
- How We Express Ourselves
- How We Organize Ourselves
- How the World Works
- Sharing the Planet

IB Mission

The International Baccalaureate aims to develop inquiring, knowledgeable and caring young people who help to create a better and more peaceful world through intercultural understanding and respect.

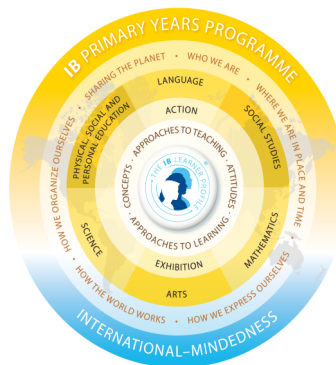
To this end the organization works with schools, governments and international organizations to develop challenging programs of international education and rigorous assessment.

These programs encourage students across the world to become active, compassionate and life-long learners who understand that other people, with their differences, can also be right.

AACPS Mission

It is the mission of Anne Arundel County Public Schools to educate students to the highest standards and to eliminate the achievement gaps among all student groups. We will do this by:

- Holding high expectations for all students
- Building positive relationships with all students
- Creating, delivering and monitoring a relevant curriculum
- Providing appropriate academic and social development support
- Holding ourselves accountable for the success of all students
- Maintaining a safe and supportive learning environment
- Supporting a quality workforce
- Engaging our community
- Demanding equity



Teaching and learning in all IB Programmes

Based on Inquiry * Focused on developing conceptual understanding * Developed in local and global contexts * Focused on effective teamwork and collaboration * Differentiated for the needs of all learners * Informed by assessment (formative and summative)